

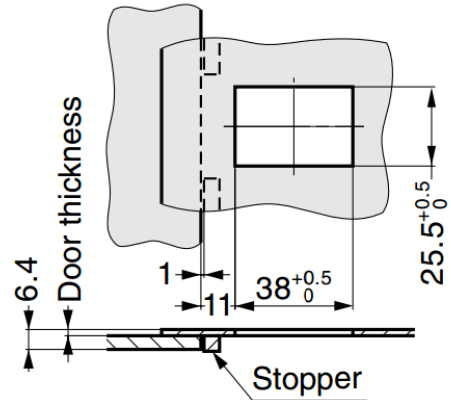
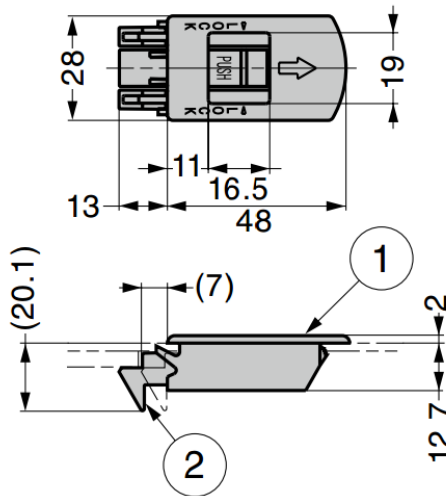
GSX-48 Snap Lock

Features

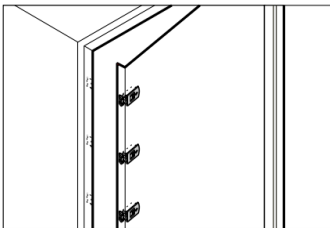
- Door or lid can be opened / closed with a single touch
- Easy installation with one-touch
- With temporary holding function
- Even if multiple latches are installed, door can also be opened at once by keeping all of them temporarily held
- Compliant with flame retardancy standards and UL94 standard



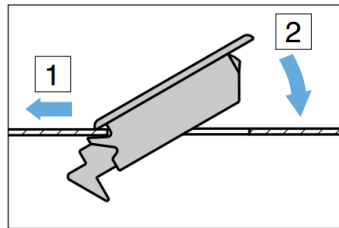
No.	Part Name	Material
①	Body	PA (UL94V-2)
②	Latch	POM (UL94HB)
-	Spring	Stainless Steel (SUS304)



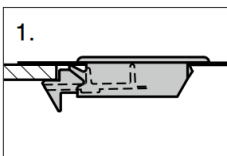
Application Example



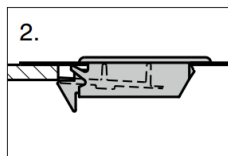
Installation



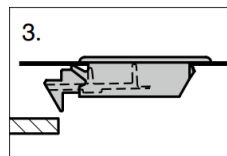
How to Operate



1. The door will be latched when closed.



2. To temporarily hold the door, slide the lever to the end.



3. The lever and latch return to their original positions when the door is opened.

Part No.	Door Thickness	Colour	Retaining Force	
GSX-48	0.8 ~ 2.3	Black	49 N	5 kg